

Direct operated pressure relief valve UZPD 30

NS 30 | p_{max} 35 MPa | Q_{max} 330 dm³/min | WK 499 840



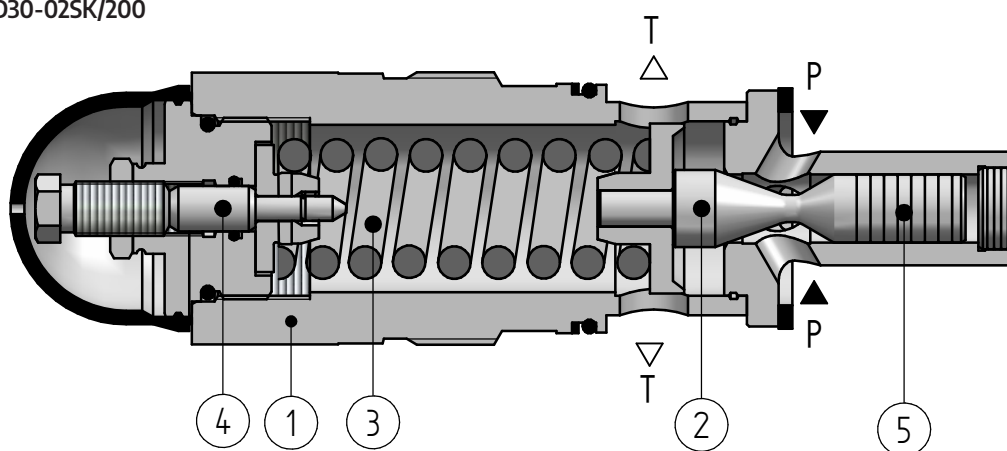
DATA SHEET - OPERATION MANUAL

APPLICATION

Pressure relief valves are designed to limit maximum pressure in the entire hydraulic system or in its part. Depending on the type of mounting in the system, direct operated pressure relief valves type **UZPD30...** can be screwed (cartridge version), mounted into threaded connections (version for threaded connection) or mounted to subplate (version for subplate mounting).



version UZPD30-02SK/200



DESCRIPTION OF OPERATION

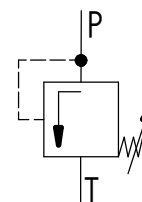
Direct operated pressure relief valve type **UZPD30...** mainly consists of body **1**, poppet **2**, spring **3**, set screw **4**. Poppet **2** is a working element. Cracking pressure setting is made by variation of spring tension **3** by means of set screw **4**. Various springs **2** (exchangeable) correspond to various ranges of cracking pressure adjustment. A dumping element **5** is used to eliminate vibrations of the valve.

TECHNICAL PARAMETERS

hydraulic fluid	mineral oil		
required fluid cleanliness	ISO 4406 class 20/18/15		
nominal fluid viscosity	37 mm ² /s at temperature 55°C		
viscosity range	2,8 ÷ 380 mm ² /s		
fluid temperature range (in a tank)	recommended: 40 ÷ 55°C; max. -20 ÷ +70°C		
ambient temperature range	-20 ÷ 70°C		
max. operating pressure	35 MPa		
max. pressure (port T)	31,5 MPa		
weight	UZPD30...K...	UZPD30...G...	UZPD30...P...
	2,2 kg	13,9 kg	13,9 kg

assembly and operation requirements at www.operating-conditions.ponar.pl

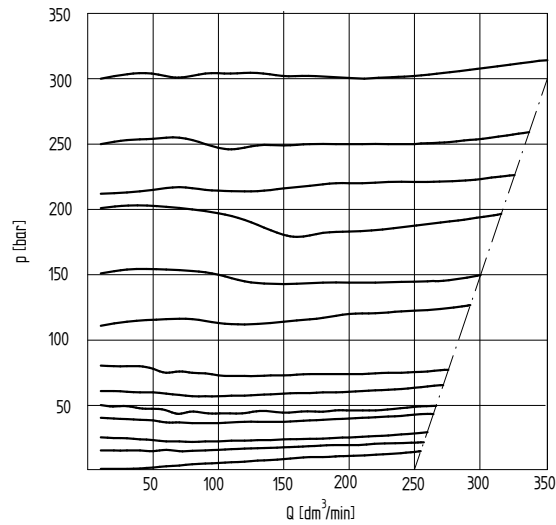
HYDRAULIC DIAGRAM



PERFORMANCE CURVES

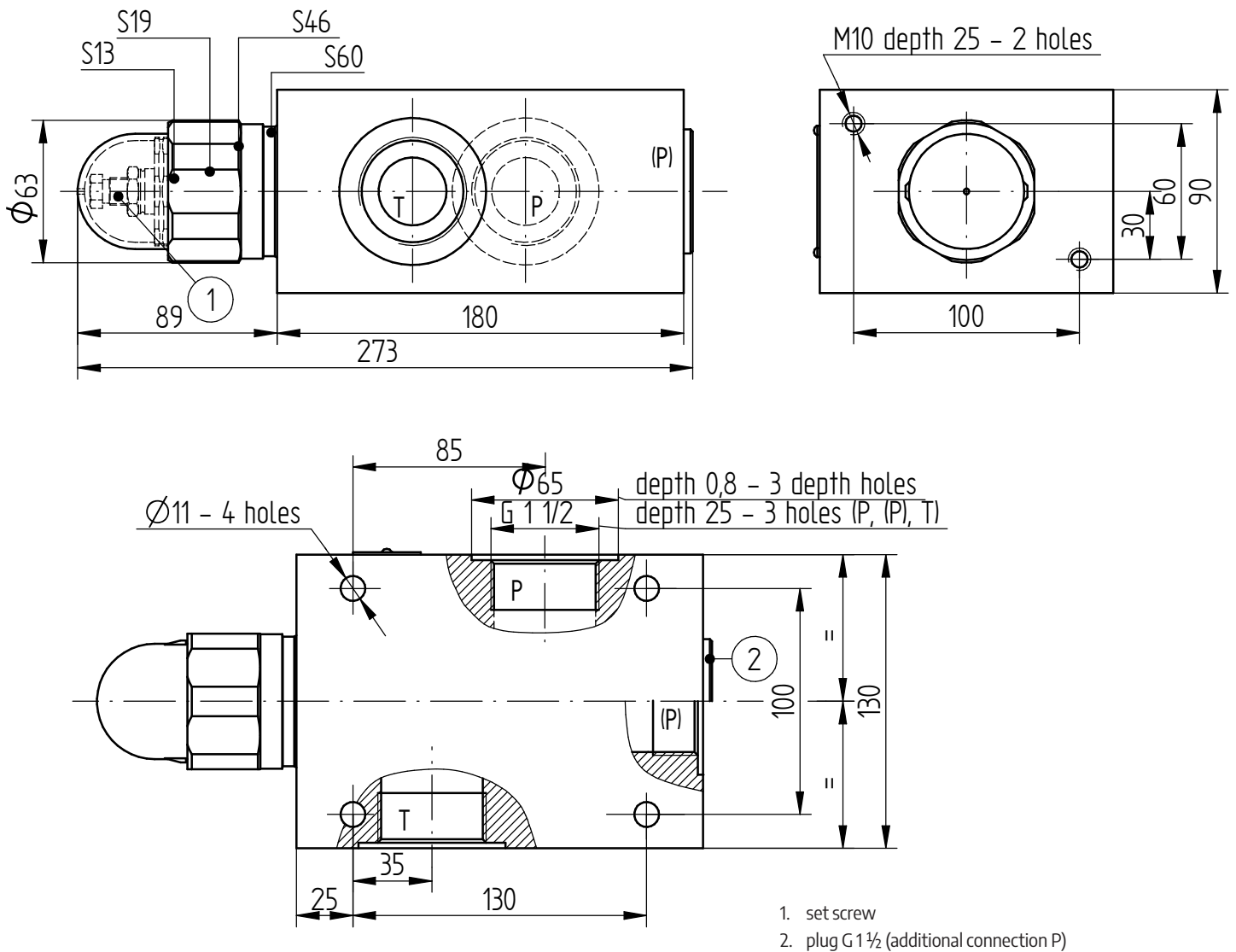
measured at viscosity $\nu = 41 \text{ mm}^2/\text{s}$ and temperature $t = 50^\circ\text{C}$

characteristics for working pressure during flow



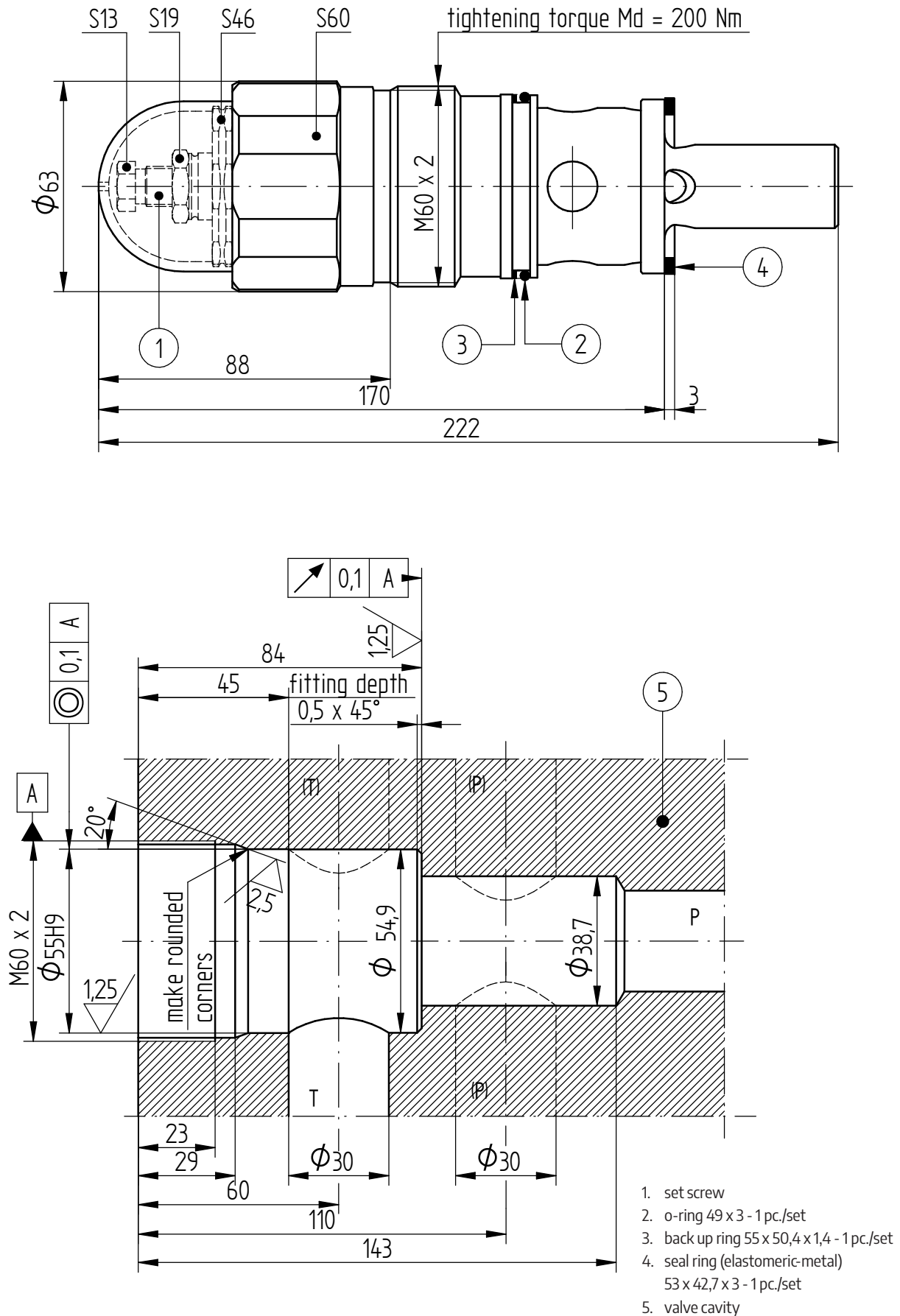
OVERALL AND CONNECTION DIMENSIONS

version for threaded connection UZPD30...G...



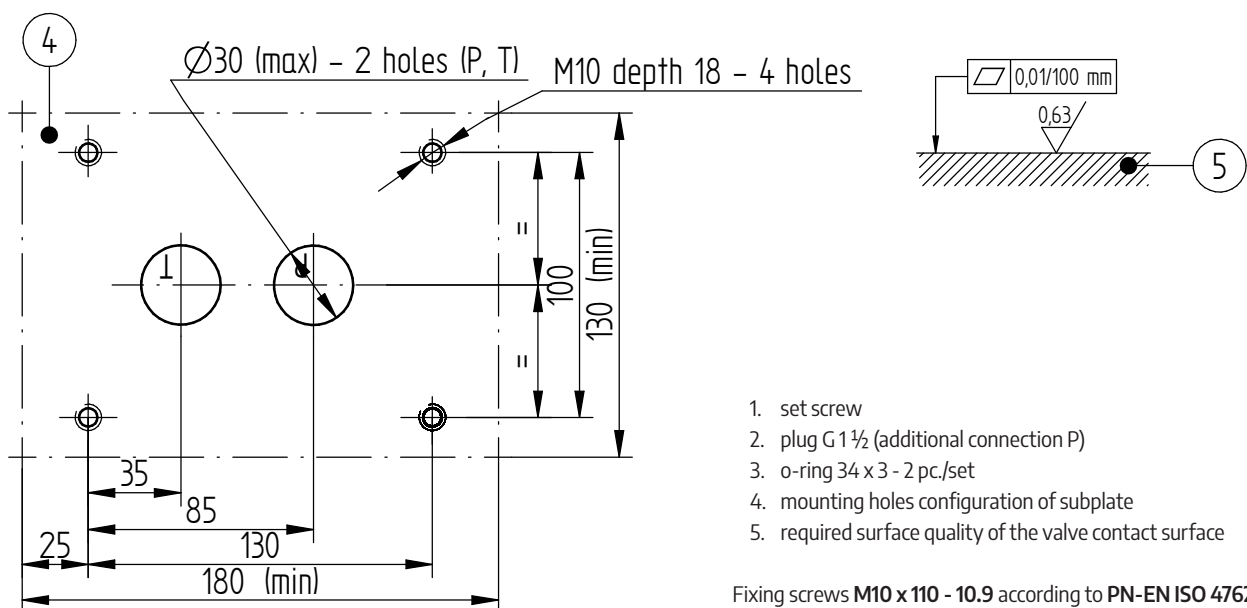
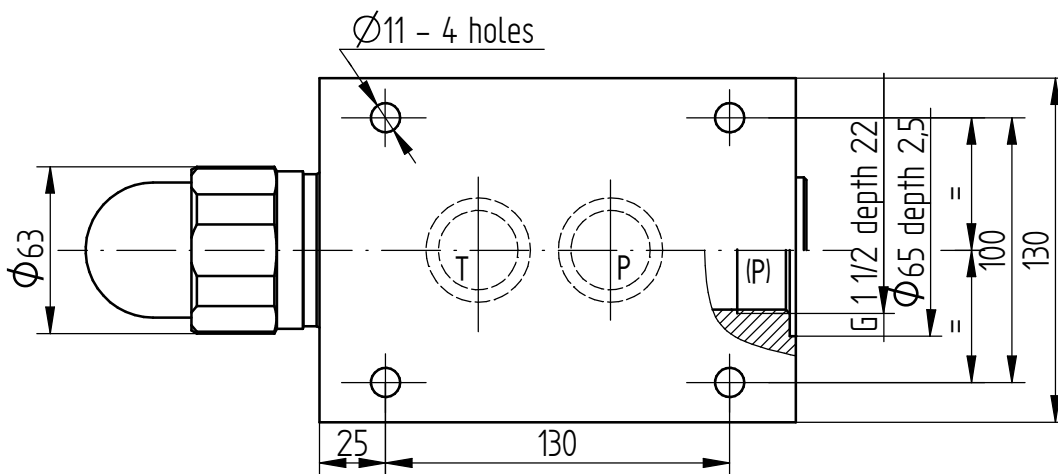
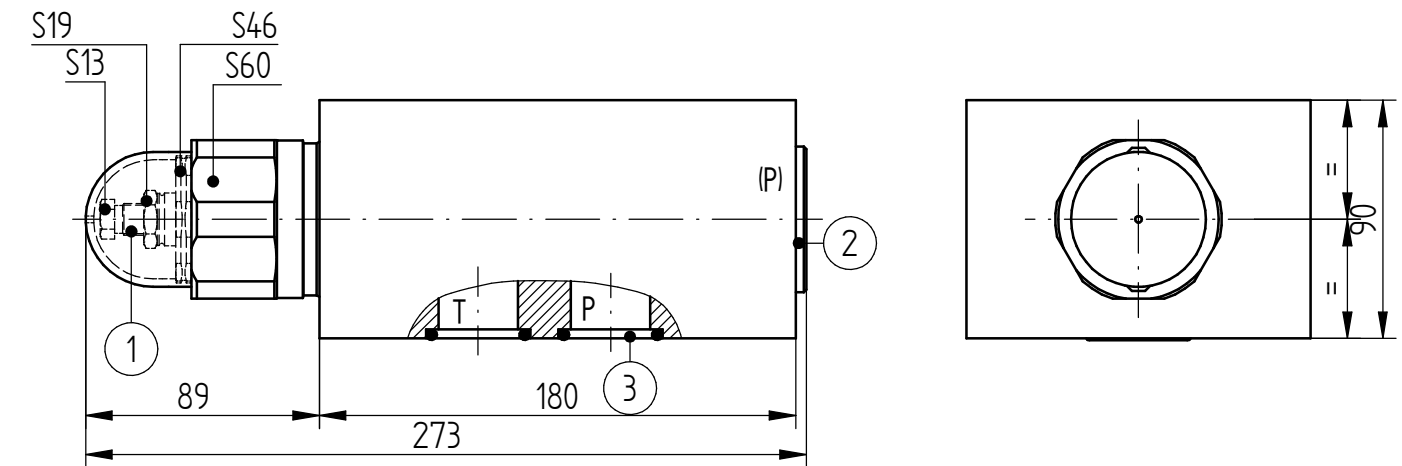
OVERALL AND CONNECTION DIMENSIONS

version for cartridge mounting UZPD30...K...



OVERALL AND CONNECTION DIMENSIONS

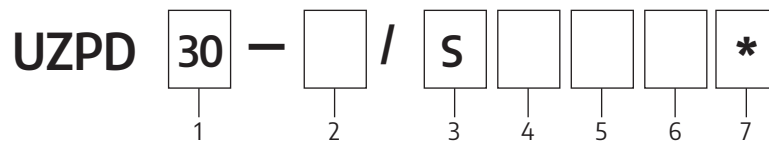
version for subplate mounting UZPD30...P...



1. set screw
2. plug G 1 1/2 (additional connection P)
3. o-ring 34 x 3 - 2 pc./set
4. mounting holes configuration of subplate
5. required surface quality of the valve contact surface

Fixing screws **M10 x 110 - 10.9** according to **PN-EN ISO 4762** (PN / M-82302) - 4 pcs / set; ordered separately; tightening torque **M_a = 68 Nm**

HOW TO ORDER



1 nominal size (NS)		4 type of connection		6 sealing	
NS30 =	30	cartridge mounting =	K	NBR (for fluids on mineral oil base) =	Ø
2 series number		for threaded connection =	G	FPM (for fluids on phosphate ester base) =	V
series 02 =	02	for subplate mounting =	P		
(00-09) connection and installation dimensions unchanged		5 pressure setting		7 further requirements =	*
3 adjustment method		up to 2,5 MPa =	25	(to be agreed upon with the Manufacturer)	
hexagon socket set screw =	S	up to 5 MPa =	50		
		up to 10 MPa =	100		
		up to 20 MPa =	200		
		up to 35 MPa =	350		

Ø indicates that the box should be left blank. The symbols in bold are the preferred versions available in short delivery time.

Coding example: **UZPD30-02SK/350**

CONTACT

PONAR Wadowice S.A.
ul. Wojska Polskiego 29
34-100 Wadowice

tel. +48 33 488 21 00
www.ponar-wadowice.pl