

Check valve UZZB 06

NS 6 | p_{max} 35 MPa | Q_{max} 20 dm³/min | WK 450 432



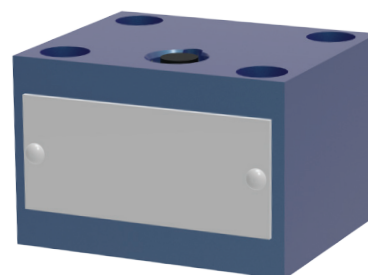
DATA SHEET - OPERATION MANUAL

APPLICATION

Check valve **UZZB06...** type is used for closing fluid flow in one direction and opening free flow in the opposite direction. The valve and subplate can be mounted in any position.

DESCRIPTION OF OPERATION

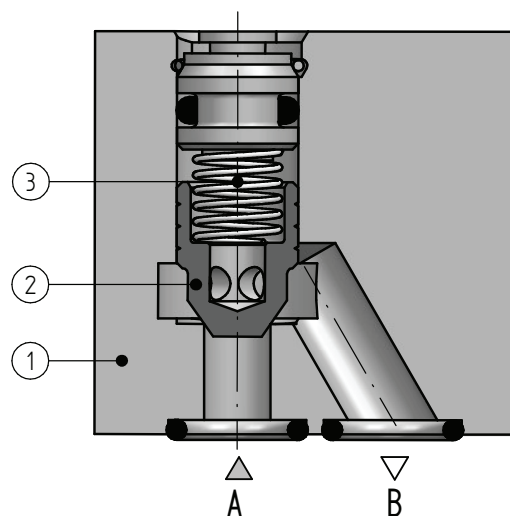
When fluid flows from **A** to **B**, the pressure moves the poppet **2** pushed by the spring **3** from the seat in the housing **1** opening free flow. The cracking pressure depends from the initial tension of the spring. In the opposite direction from **B** to **A**, the spring and fluid press down the poppet to the seat, closing the flow.



TECHNICAL PARAMETERS

hydraulic fluid	mineral oil	
required oil cleanliness class	ISO 4406 class 20/18/15	
nominal fluid viscosity	37 mm ² /s at temperature 55°C	
viscosity range	2,8 ÷ 380 mm ² /s	
temperature range (in tank)	max. -20 ÷ 70 °C; rec. 40 ÷ 55°C	
ambient temperature range	-20 ÷ 70°C	
max. working pressure	35 MPa	
cracking pressure	0 MPa (without spring)	0,05 MPa
	0,1 MPa	0,15 MPa
weight	0,5 kg	

assembly and operation requirements at: www.operating-conditions.ponar.pl

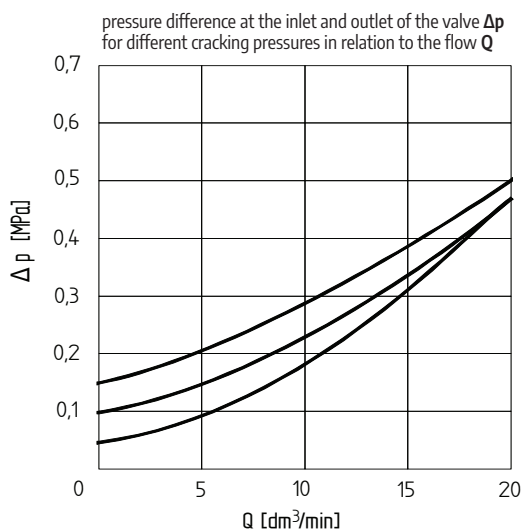


HYDRAULIC DIAGRAM

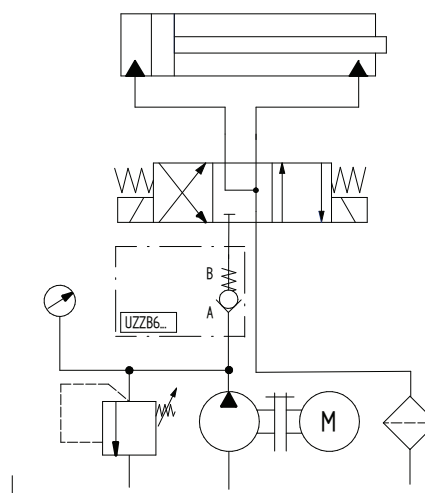


CHARACTERISTICS

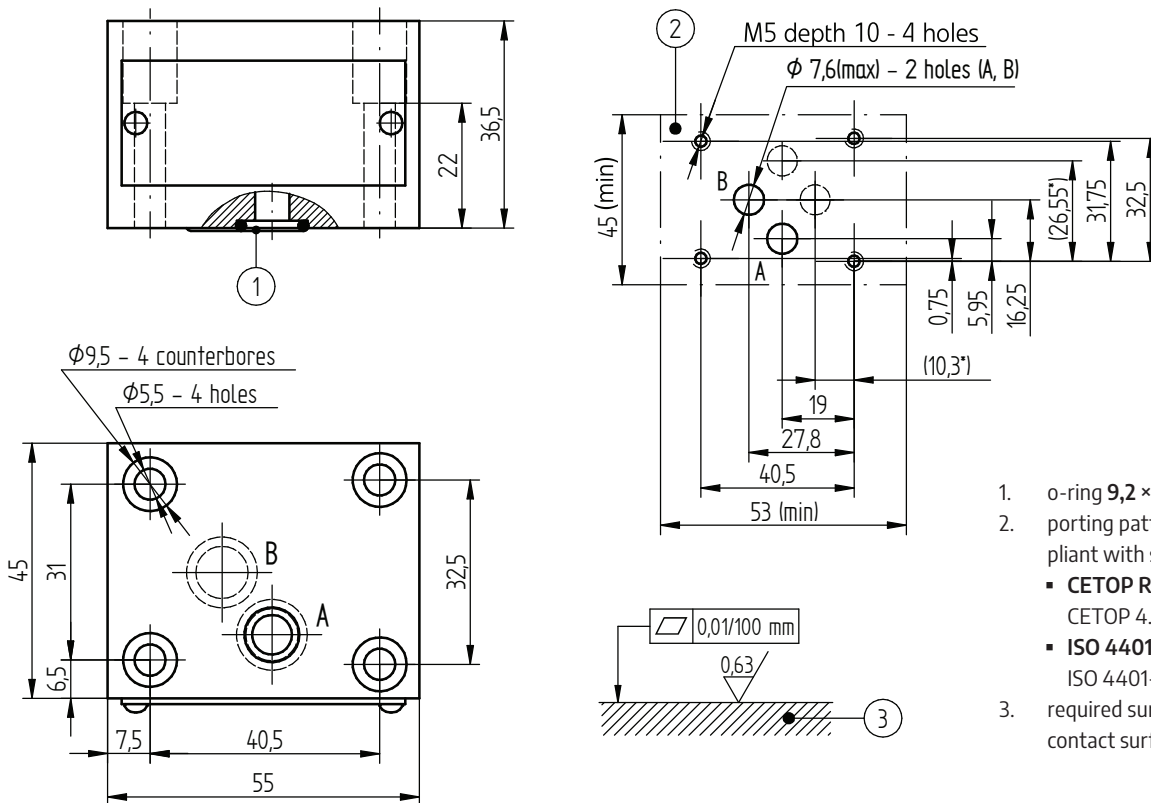
for fluid viscosity $\nu = 41 \text{ mm}^2/\text{s}$ and temp. $t = 50 \text{ }^\circ\text{C}$



APPLICATION EXAMPLE



OVERALL AND CONNECTION DIMENSIONS



- o-ring $9,2 \times 1,8$ - 2 pcs/set (A, B)
- porting pattern of the subplate compliant with standards:
 - CETOP RP 121H - designation CETOP 4.2-4-03 (NS CETOP03)
 - ISO 4401 - designation ISO 4401-03-02-0-94
- required surface quality of the valve contact surface

HOW TO ORDER

UZZB 06 - [] / [] [] [] *

1 2 3 4 5

1 nominal size

NS6 = 06

2 series number

series 20 = 20

(20-29) connection and installation dimensions unchanged

3 cracking pressure

0 MPa (without spring) = 00

0,05 MPa = 05

0,1 MPa = 10

0,15 MPa = 15

4 sealing

NBR (for fluids on mineral oil base) = \emptyset

FKM (for fluids on phosphate ester base) = V

5 further requirements = *

(to be agreed upon with the Manufacturer)

\emptyset indicates that the box should be left blank.

The **symbols in bold** are the preferred versions available in short delivery time.

coding example: **UZZB06-20/05**

SUBPLATES AND MOUNTING SCREWS

Subplates should be ordered according to data sheet

WK 496 480:

G341/01 - threaded connection - $G\frac{1}{4}$

G342/01 - threaded connection - $G\frac{3}{8}$

G502/01 - threaded connection - $G\frac{1}{2}$

Subplates and mounting screws for mounting the valve

M5 \times 30-10.9 acc. to PN - EN ISO 4762 (PN/M - 82302) - 4 pcs/set **delivered on separate order.**

Tightening torque of screws $M_d = 9$ Nm.

CONTACT

PONAR Wadowice S.A.
ul. Wojska Polskiego 29
34-100 Wadowice

tel. +48 33 488 21 00
www.ponar-wadowice.pl