

Check valve type UZZB 20

NS 20 | p_{max} 35 MPa | Q_{max} 200 dm³/min | WK 450 351



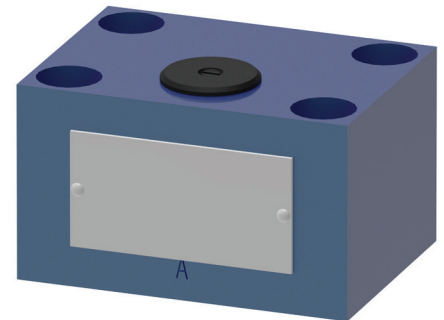
DATA SHEET - OPERATION MANUAL

APPLICATION

Check valve **UZZB20...** type is used for closing fluid flow in one direction and opening free flow in the opposite direction. The valve and subplate can be mounted in any position.

DESCRIPTION OF OPERATION

When fluid flows from **A** to **B**, the pressure moves the poppet **2** pushed by the spring **3** from the seat in the housing **1** opening free flow. The cracking pressure depends from the initial tension of the spring. In the opposite direction from **B** to **A**, the spring and fluid press down the poppet to the seat, closing the flow.



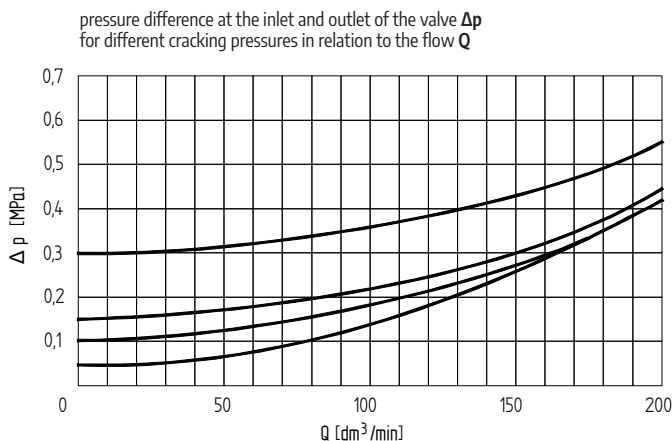
TECHNICAL PARAMETERS

hydraulic fluid	mineral oil	
required fluid cleanliness class	ISO 4406 class 20/18/15	
nominal fluid viscosity	37 mm ² /s at temperature 55 °C	
viscosity range	2,8 ÷ 380 mm ² /s	
fluid temperature range (in tank)	max. -20 ÷ 70 °C; rec. 40 ÷ 55 °C	
ambient temperature range	-20 ÷ 70 °C	
max. working pressure	35 MPa	
cracking pressure	0 MPa (without spring)	0,05 MPa
	0,1 MPa	0,15 MPa
	0,3 MPa	
weight	3,1 kg	

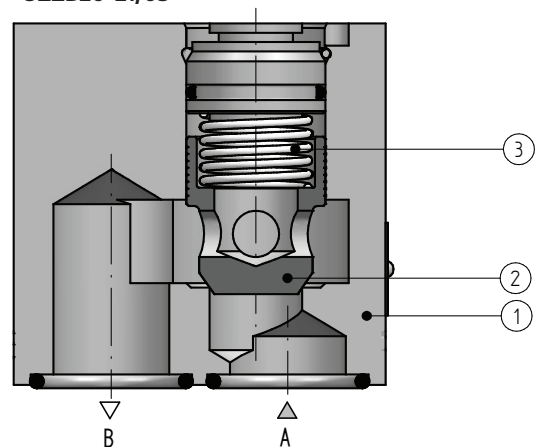
assembly and operation requirements at: www.operating-conditions.ponar.pl

PERFORMANCE CURVES

for fluid viscosity $\nu = 41 \text{ mm}^2/\text{s}$ and temp. $t = 50 \text{ }^\circ\text{C}$



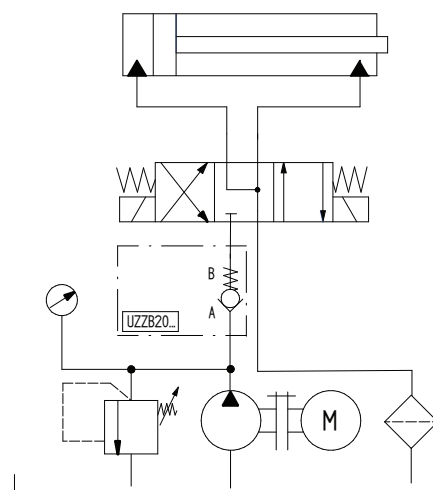
UZZB20-21/05



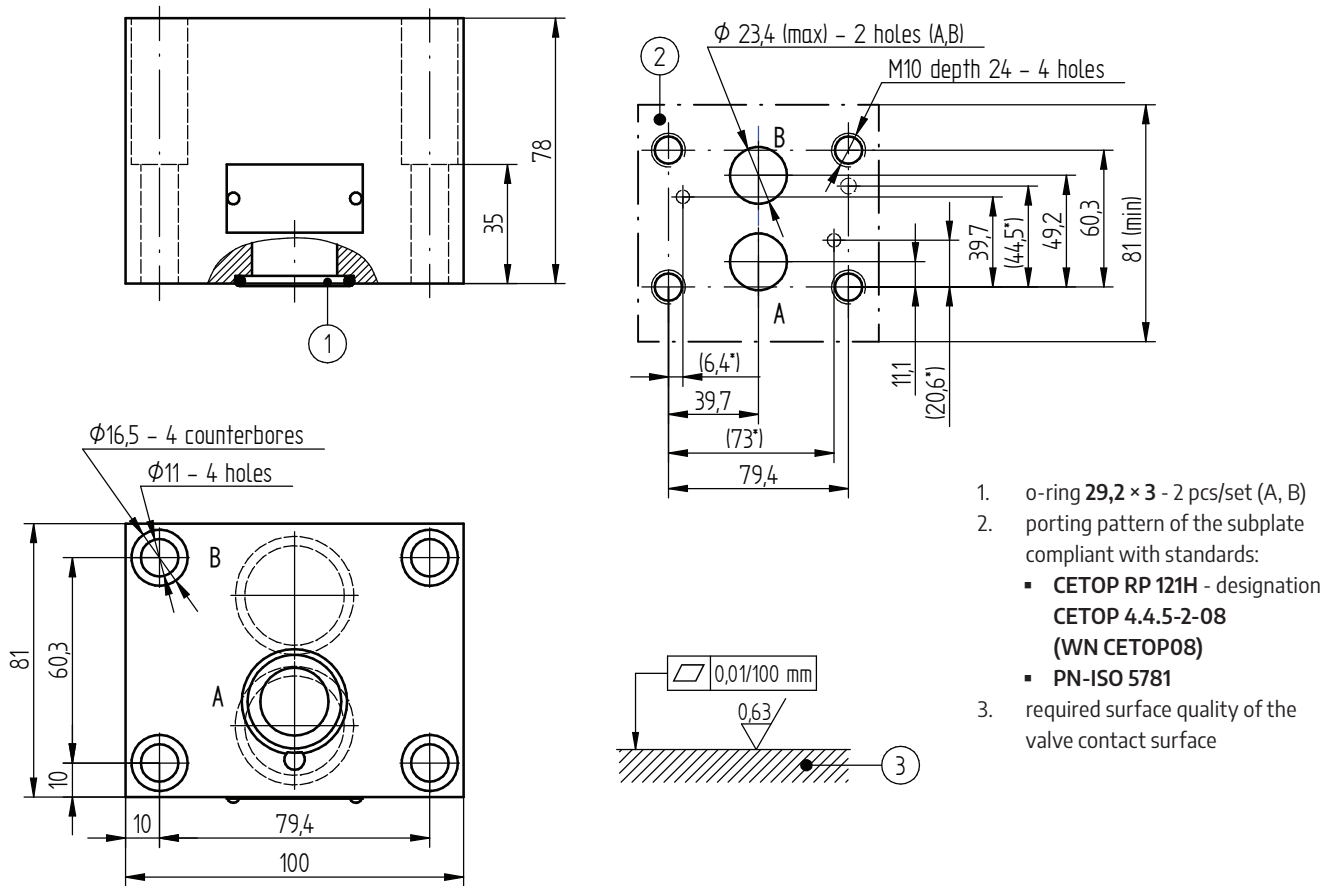
HYDRAULIC DIAGRAM



APPLICATION EXAMPLE



OVERALL AND CONNECTION DIMENSIONS



- o-ring 29,2 × 3 - 2 pcs/set (A, B)
- porting pattern of the subplate compliant with standards:
 - CETOP RP 121H - designation CETOP 4.4.5-2-08 (WN CETOP08)
 - PN-ISO 5781
- required surface quality of the valve contact surface

HOW TO ORDER

UZZB **20** - / *

1 2 3 4 5

1 nominal size

NS20 = 20

2 series number

series 21 = 21
(20 ÷ 29) - connection and installation dimensions unchanged

3 cracking pressure

0 MPa (without spring) = 00
0,05 MPa = 05
0,1 MPa = 10
0,15 MPa = 15
0,3 MPa = 30

4 sealing

NBR (for fluids on mineral oil base) = \emptyset
FKM (for fluids on phosphate ester base) = V

5 further requirements = *

(to be agreed upon with the Manufacturer)

\emptyset indicates that the box should be left blank.

The **symbols in bold** are the preferred versions available in short delivery time.
coding example: **UZZB20-21/05**

SUBPLATES AND MOUNTING SCREWS

Subplates should be ordered according to data sheet **WK 450 799:**
G413/01 – threaded connection – **G1**

Subplates and mounting screws for mounting the valve **M10 × 50 – 10.9** acc.to PN – EN ISO 4762 (PN/M – 82302) – 4 pcs/set **delivered on separate order.**
tightening torque of the screws **M_d = 73 Nm.**

CONTACT

PONAR Wadowice S.A.
ul. Wojska Polskiego 29
34-100 Wadowice

tel. +48 33 488 21 00
www.ponar-wadowice.pl