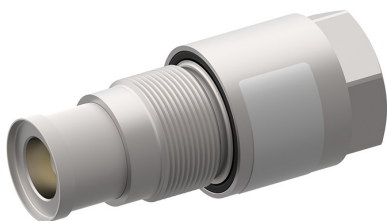


# Cooler-Bypass Thermostat Valve, Size 16

$Q_{\max} = 300 \text{ l/min}$ ,  $p_{\max} = 50 \text{ bar}$

Temperature-controlled, integral relief function, various pressure settings available

Series WDTUVB...



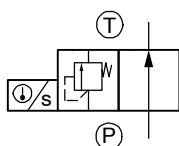
- Temperature-dependent bypass control
- Integral pressure-relief function
- Oil warms up rapidly (cold-start phase)
- Direct-mounted in coolers or manifold blocks
- High flow rates
- Low headloss
- Various pressure settings available
- Very good reproducibility
- Extremely reliable
- Very stable operation
- All exposed parts with zinc-nickel plating
- Can be fitted in a line-mounting body

## 1 Description

These direct acting bypass thermostat valves are size 16, temperature controlled, high performance screw-in cartridges with an M33x1.5 mounting thread. They are intended to be installed directly in coolers or line-mounting body. Depending on the temperature of the oil, they route the flow either straight to tank or through the cooler. When the oil is cold ( $< 50 \text{ }^\circ\text{C}$ ), the connection  $P \rightarrow T$  is open (bypass), which means that the flow is directed to tank with minimal headloss and the oil warms up rapidly. After the changeover temperature is reached ( $> 65 \text{ }^\circ\text{C}$ ), the integral thermo-

stat element closes the connection  $P \rightarrow T$ . The valve now directs the oil flow through the cooler. With an integral pressure-relief function, the bypass thermostat cartridge also safeguards the cooler by protecting it from any pressure peaks that may result from excessive flow rates. The maximum pressure is determined by the model that is selected. The cartridges are predominantly used in coolers in mobile as well as industrial applications. All external parts of the cartridge are zinc-nickel plated to DIN 50 979 and are thus suitable for use in the harshest operating environments.

## 2 Symbol



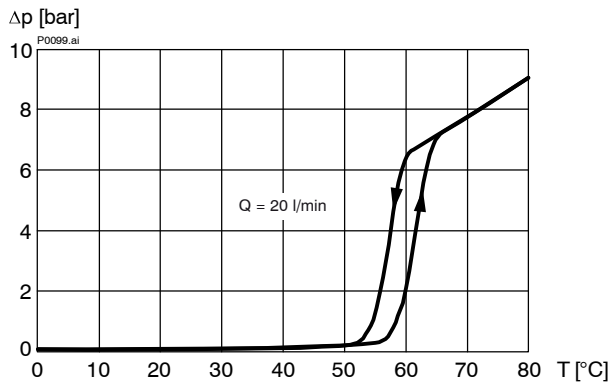
## 3 Technical data

General characteristics	Description, value, unit
Designation	cooler-bypass thermostat valve
Design	temperature-controlled, integral relief function, choice of maximum pressure setting
Mounting method	screw-in cartridge M33x1.5
Tightening torque	60 Nm $\pm$ 10 %
Size	size 16, cavity type KTU
Weight	0.6 kg
Mounting attitude	horizontal design, others installations position give others $\Delta p$ -values
Ambient temperature range	$-30^\circ \text{ C} \dots +90^\circ \text{ C}$

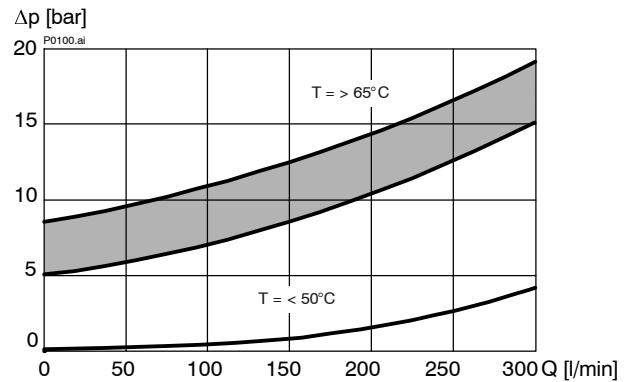
Hydraulic characteristics	Description, value, unit
Maximum operating pressure	50 bar
Maximum flow rate	300 l/min
Nominal pressure ranges	2 bar, 3 bar, 6 bar or 9 bar (other pressures - consult BUCHER)
Temperature for start of control action	50 °C
Flow direction	see symbol
Hydraulic fluid	HL and HLP mineral oil to DIN 51 524; for other fluids, please contact BUCHER
Hydraulic fluid temperature range	-30° C ... +90° C
Viscosity range	10...650 mm <sup>2</sup> /s (cSt), recommended 15...250 mm <sup>2</sup> /s (cSt)
Minimum fluid cleanliness Cleanliness class to ISO 4406 : 1999	class 20/18/15

### 4 Performance graphs measured with oil viscosity 33 mm<sup>2</sup>/s (cSt), mounting position horizontal

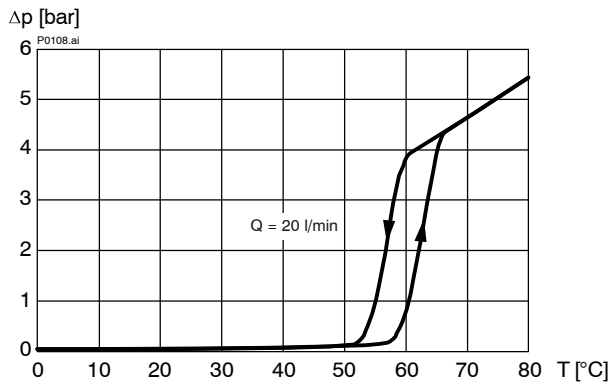
$\Delta p = f(Q)$  Pressure drop v. temperature [ 9 bar ]



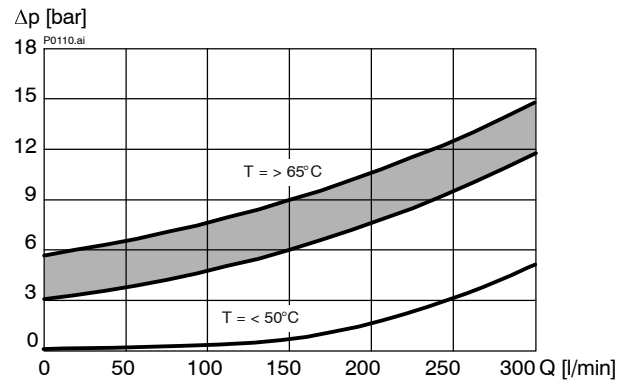
$\Delta p = f(Q)$  Pressure drop v. flow rate [ 9 bar ]



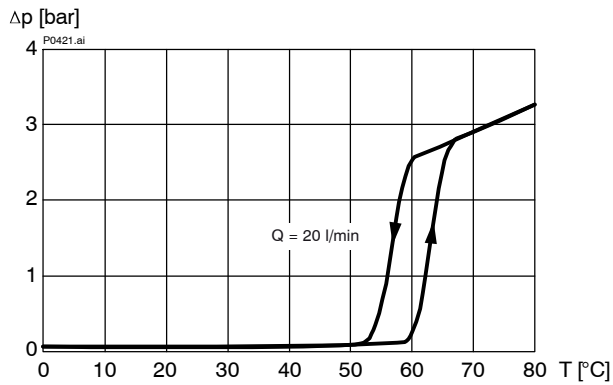
$\Delta p = f(Q)$  Pressure drop v. temperature [ 6 bar ]



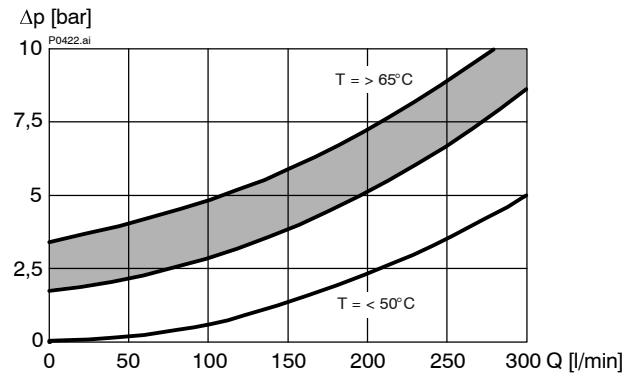
$\Delta p = f(Q)$  Pressure drop v. flow rate [ 6 bar ]



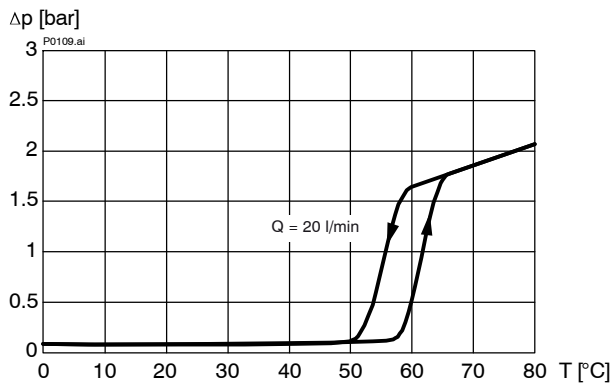
$\Delta p = f(Q)$  Pressure drop v. temperature [ 3 bar ]



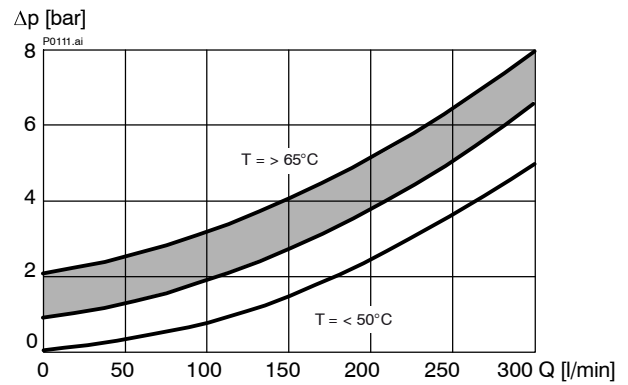
$\Delta p = f(Q)$  Pressure drop v. flow rate [ 3 bar ]



$\Delta p = f(Q)$  Pressure drop v. temperature [ 2 bar ]

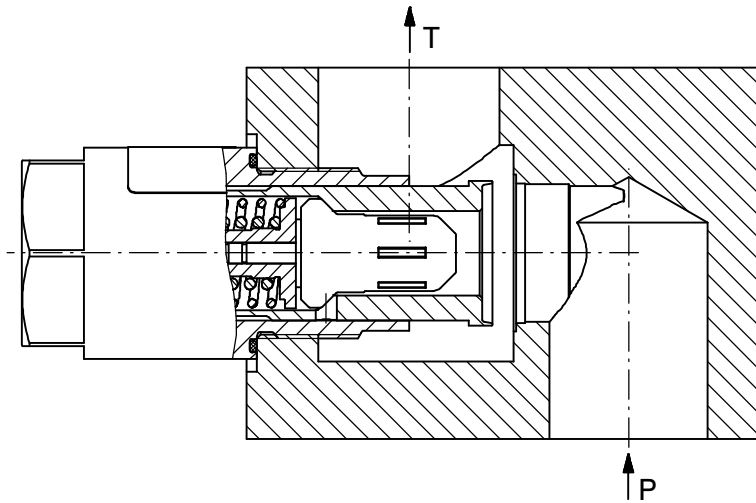


$\Delta p = f(Q)$  Pressure drop v. flow rate [ 2 bar ]

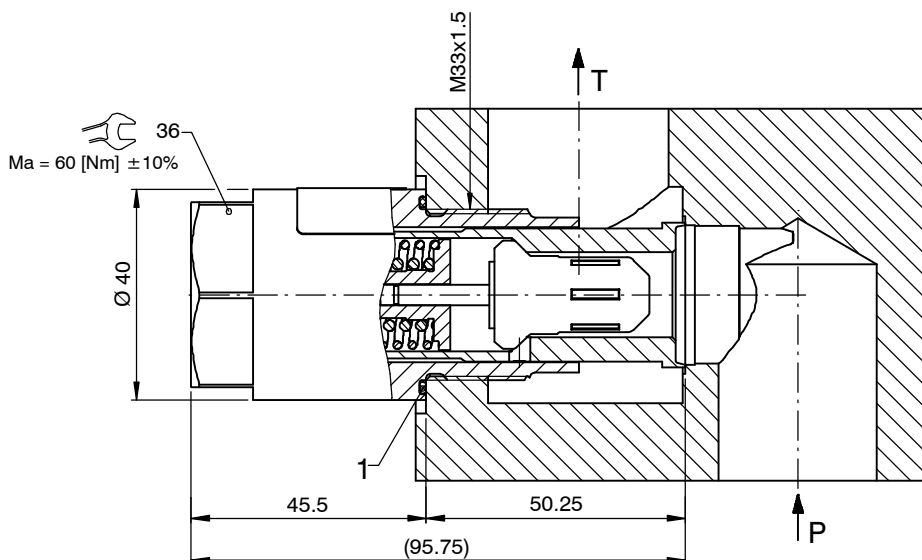


## 5 Dimensions & sectional view

Thermostat element < 50 °C – connection P → T open



Thermostat element > 65 °C – connection P → T closed



## 6 Installation information



### IMPORTANT!

When fitting the cartridges, use the specified tightening torque. No adjustments are necessary, since the cartridges are set in the factory.



### ATTENTION!

Only qualified personnel with mechanical skills may carry out any maintenance work. Generally, the only work that should ever be undertaken is to check, and possibly replace, the seals. When changing seals, oil or grease the new seals thoroughly before fitting them.



### IMPORTANT!

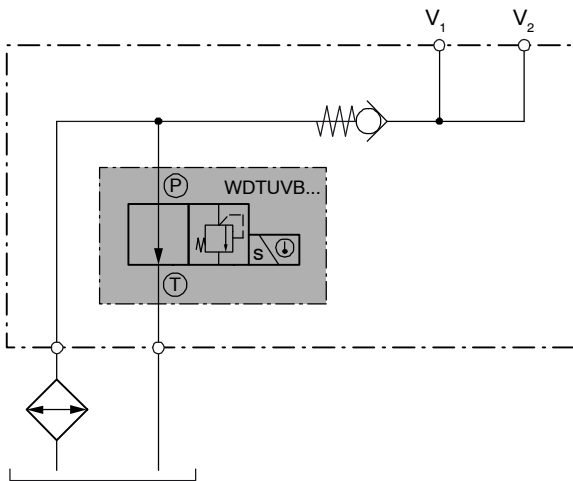
Other mounting position and the axial incident flow from port P to valve spool results in other  $\Delta p$ -values.

### Seals

Item	Description
1	O-ring no. 028 $\varnothing$ 34,65 x 1,78 HNBR90

## 7 Application examples

Manifold block with integral cooler-bypass thermostat valve



## 8 Ordering code

Ex. 

W	D	T	UV	B	-	50	-	90	-	16	J	-	1
---	---	---	----	---	---	----	---	----	---	----	---	---	---

- W = directional valve, cartridge construction
- D = direct acting
- T = temperature-actuated (thermostat element)
- UV = pressure-relief function is incorporated
- B ... Q = standard model - see relevant data sheets
- Z ... R = special features - please consult BUCHER
- 50 = response temperature of thermostat 50 °C
- ... = for other response temperatures, please consult BUCHER
- 90 = pressure setting =  $p_{max} = 9$  bar
- 60 = pressure setting =  $p_{max} = 6$  bar
- 30 = pressure setting =  $p_{max} = 3$  bar
- 20 = pressure setting =  $p_{max} = 2$  bar
- 16 = size 16
- J = HNBR seals (standard)  
(special seals - please contact BUCHER)
- 1 ... 9 = design stage (omit when ordering new units)

## 9 Related data sheets

Reference	(Old no.)	Description
400-P-080141		Cavity type KTU
400-P-750151		Line-mounting body, type GEUA (G 1")

info.ch@bucherhydraulics.com

www.bucherhydraulics.com

© 2015 by Bucher Hydraulics AG Frutigen, CH-3714 Frutigen

All rights reserved.

Data is provided for the purpose of product description only, and must not be construed as warranted characteristics in the legal sense. The information does not relieve users from the duty of conducting their own evaluations and tests. Because the products are subject to continual improvement, we reserve the right to amend the product specifications contained in this catalogue.

Classification: 430.300.-.305.330.380