

# final pump - series XV

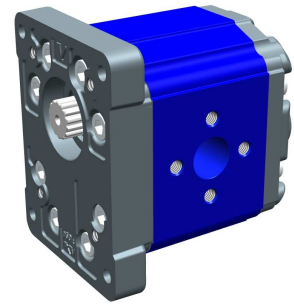
**X3F-3**

**STANDARD FINAL PUMP**  
**ø50.8 FLANGE - TAPER SHAFT**

**X 3 F 78 02 D B B A**

Series	X	series XV
Group	3	group 3
Category	F	final pump
Displacement	78	38
Flange	02	Ø50.8 female right rotation
Shaft	D	SCF01 - Splined ø24.5 - z=14 H=18 m=1.6 - DIN5482 25x22
Body	IN	inlet - Ø51 Ø27 M10
	OUT	outlet - Ø51 Ø27 M10
Cover	A	standard

**X3T**  
**X3I-3**



**XF301**

**Technical data table**

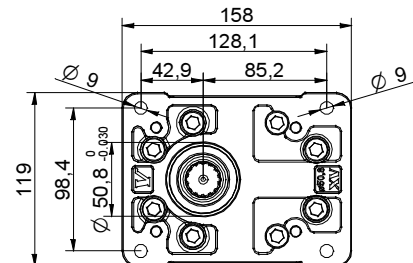
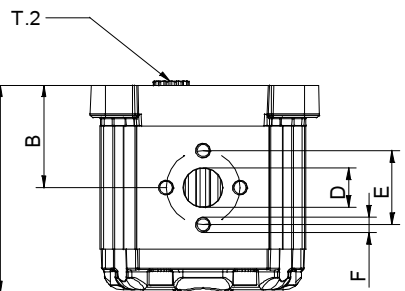
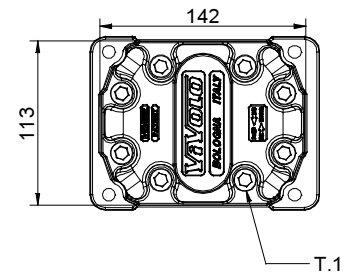
TYPE	Displacement cm3/rev	Max. Pressure		CODE					
		P1 bar	P3 bar	Left rotation			Right rotation		
X3F-3/15	14,89	300	320	X 3 F 66 01	D A A A	X 3 F 66 02	D A A A	D A A A	D A A A
X3F-3/18	17,37	300	320	X 3 F 68 01	D A A A	X 3 F 68 02	D A A A	D A A A	D A A A
X3F-3/21	21,10	280	300	X 3 F 70 01	D A A A	X 3 F 70 02	D A A A	D A A A	D A A A
X3F-3/27	26,97	250	270	X 3 F 72 01	D A A A	X 3 F 72 02	D A A A	D A A A	D A A A
X3F-3/32	32,27	250	270	X 3 F 74 01	D B B A	X 3 F 74 02	D B B A	D B B A	D B B A
X3F-3/38	38,47	250	270	X 3 F 78 01	D B B A	X 3 F 78 02	D B B A	D B B A	D B B A
X3F-3/43	43,44	250	270	X 3 F 79 01	D B B A	X 3 F 79 02	D B B A	D B B A	D B B A
X3F-3/47	47,16	230	250	X 3 F 80 01	D B B A	X 3 F 80 02	D B B A	D B B A	D B B A
X3F-3/51	50,88	230	250	X 3 F 81 01	D B B A	X 3 F 81 02	D B B A	D B B A	D B B A
X3F-3/54	54,60	230	250	X 3 F 82 01	D B B A	X 3 F 82 02	D B B A	D B B A	D B B A
X3F-3/61	60,81	230	250	X 3 F 83 01	D C C A	X 3 F 83 02	D C C A	D C C A	D C C A
X3F-3/64	64,53	210	230	X 3 F 85 01	D C C A	X 3 F 85 02	D C C A	D C C A	D C C A
X3F-3/70	70,74	200	220	X 3 F 86 01	D C C A	X 3 F 86 02	D C C A	D C C A	D C C A
X3F-3/74	74,46	180	200	X 3 F 87 01	D C C A	X 3 F 87 02	D C C A	D C C A	D C C A
X3F-3/90	86,87	150	170	X 3 F 89 01	D C C A	X 3 F 89 02	D C C A	D C C A	D C C A

P1) Max. working pressure - P3) Max. peak pressure

For heavy-duty applications, it is recommended to check the admissible torque of the shaft

**Dimensions table**

TYPE	Weight kg	A	B	D	E	F	D	E	F
		mm	mm	IN			OUT		
X3F-3/15	7,010	124,0	61,0	ø20	40	M8	ø20	40	M8
X3F-3/18	7,070	126,0	62,0	ø20	40	M8	ø20	40	M8
X3F-3/21	7,150	129,0	63,5	ø20	40	M8	ø20	40	M8
X3F-3/27	7,250	133,0	65,5	ø20	40	M8	ø20	40	M8
X3F-3/32	7,390	138,0	68,0	ø27	51	M10	ø27	51	M10
X3F-3/38	7,520	143,0	70,5	ø27	51	M10	ø27	51	M10
X3F-3/43	7,630	147,0	72,5	ø27	51	M10	ø27	51	M10
X3F-3/47	7,710	150,0	74,0	ø27	51	M10	ø27	51	M10
X3F-3/51	7,790	153,0	75,5	ø27	51	M10	ø27	51	M10
X3F-3/54	7,870	156,0	77,0	ø27	51	M10	ø27	51	M10
X3F-3/61	8,010	161,0	79,5	ø36	62	M10	ø36	62	M10
X3F-3/64	8,090	164,0	81,0	ø36	62	M10	ø36	62	M10
X3F-3/70	8,220	169,0	83,5	ø36	62	M10	ø36	62	M10
X3F-3/74	8,300	172,0	85,0	ø36	62	M10	ø36	62	M10
X3F-3/90	8,570	182,0	90,0	ø36	62	M10	ø36	62	M10



09/04/08 X3F780208BA.dft

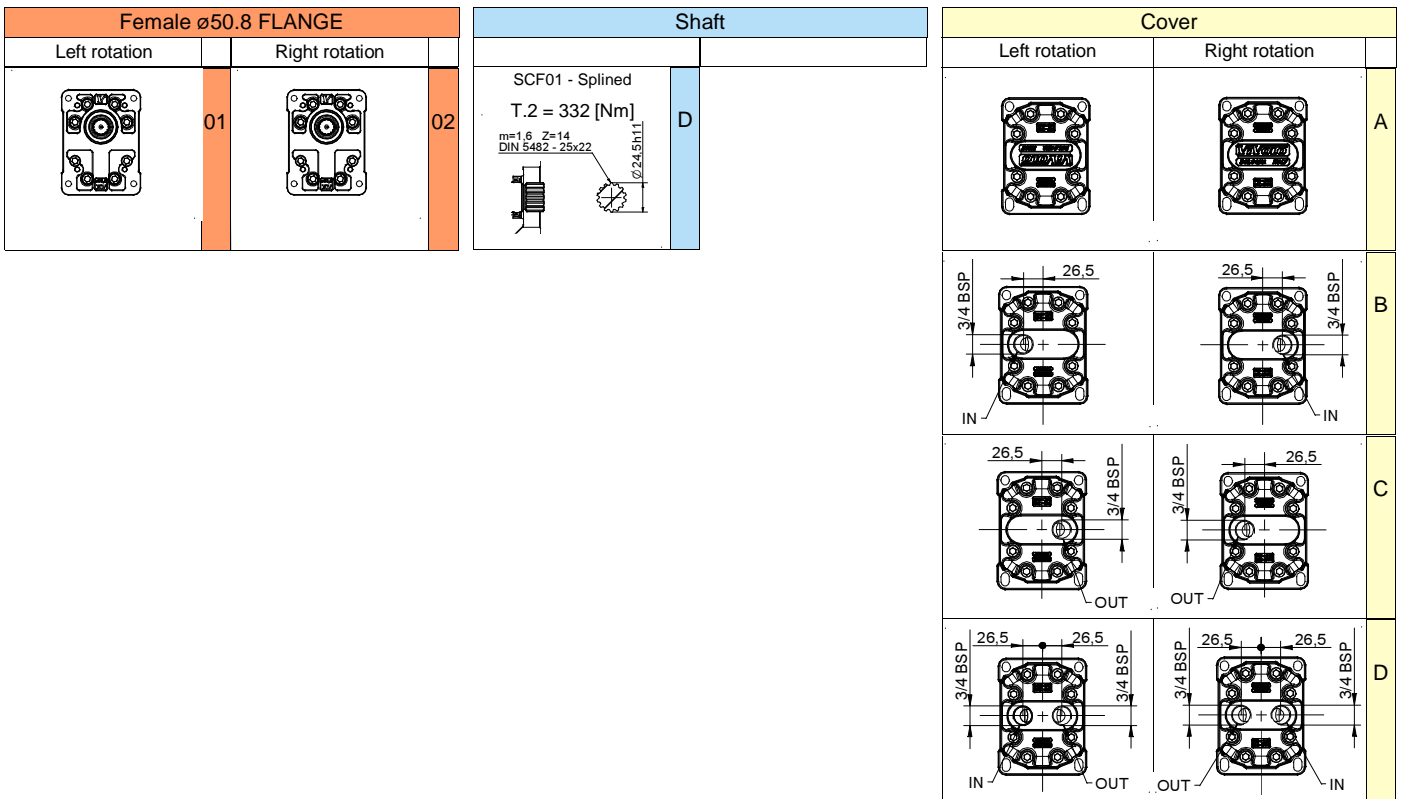
T.1 = 60÷65 [Nm] - screw tightening torque M10

T.2 = 332 [Nm] - admissible shaft torque (N.B. When choosing a shaft, always check the admissible torque).

# Table of variations

**X3F-3**

## Female $\varnothing 50.8$ FLANGE



Displacement	
TYPE	CODE
X3F-3/15	<b>66</b>
X3F-3/18	<b>68</b>
X3F-3/21	<b>70</b>
X3F-3/27	<b>72</b>
X3F-3/32	<b>74</b>
X3F-3/38	<b>78</b>
X3F-3/43	<b>79</b>
X3F-3/47	<b>80</b>
X3F-3/51	<b>81</b>
X3F-3/54	<b>82</b>
X3F-3/61	<b>83</b>
X3F-3/64	<b>85</b>
X3F-3/70	<b>86</b>
X3F-3/74	<b>87</b>
X3F-3/90	<b>89</b>

Standard bodies				
Displacement cm3/rev	Standard threads			
	15	A - A	D - D	H - H
18	A - A	D - D	H - H	
21	A - A	D - D	H - H	
27	A - A	E - E	H - H	
32	B - B	E - E	H - H	
38	B - B	E - E	H - H	
43	B - B	E - E	H - H	
47	B - B	E - E	H - H	
51	B - B	E - E	H - H	
54	B - B	E - E	H - H	
61	C - C	F - F		
64	C - C	F - F		
70	C - C	F - F		
74	C - C	F - F		
90	C - C	F - F		

Table showing standard flange and thread combinations available in stock

